

Grantees

The Meyer Foundation is proud to present the following outstanding organizations awarded grants in 2006.

Arts, Heritage, & Culture

African Continuum Theatre Coalition

www.africancontinuumtheatre.com
African Continuum Theatre Coalition presents new and traditional work that reflects the African and African American experience and illuminates the human condition.
General Operating Support \$20,000



Arlington Arts Center

www.arlingtonartscenter.org
Arlington Arts Center presents and supports new works by regional artists.
General Operating Support \$20,000

BlackRock Center for the Arts/ Germantown Cultural Arts Center

www.blackrockcenter.org
BlackRock Center for the Arts builds community through and for the arts with quality arts education, performances, and visual arts programs designed to develop life-long participants in the arts.
Program Support \$10,000

Bowen McCauley Dance

www.bmdc.org
Bowen McCauley Dance showcases the choreography of Lucy Bowen McCauley and other talented choreographers.
General Operating Support \$15,000

Capital Fringe

www.capfringe.org
Capital Fringe works to advance the arts in Washington, DC by assisting artists with special projects and helping them expand their artistic repertoire.
General Operating Support \$20,000

CityDance Ensemble

www.citydance.net
CityDance Ensemble presents original and classic DC choreography and outreach programs to diverse audiences and youth.
General Operating Support \$20,000

Class Acts Arts

www.classactsarts.org
Class Acts Arts supports art in the Washington metropolitan region by connecting local audiences with nationally renowned literary, visual, and performing artists; providing career support for local artists; and sponsoring a culturally and artistically diverse local performance series.
General Operating Support \$15,000

Cultural Alliance of Greater Washington

www.cultural-alliance.org
Cultural Alliance of Greater Washington works to increase appreciation, support, and resources for the arts and foster partnerships among the arts, business, government, media, and the public.
General Operating Support \$20,000

Cultural Development Corporation of the District of Columbia

www.culturaldc.org
Cultural Development Corporation engages artists and cultural organizations in community development and revitalization efforts throughout the District of Columbia.
General Operating Support \$40,000

Cultural Tourism DC

www.culturaltourismdc.org
Cultural Tourism DC is a grassroots consortium of more than 120 cultural, neighborhood, and economic development organizations in Washington, DC that works to strengthen the image and economy of the District of Columbia.
General Operating Support \$50,000

Dance Exchange

www.danceexchange.org
Dance Exchange is a multigenerational and multi-disciplinary company that performs, teaches, and engages people directly in the creative process of dance.
General Operating Support \$25,000

Dance/USA

www.danceusa.org
Dance/USA works to unite, strengthen, and advance the art of dance by addressing the needs and interests of the professional dance community.
Program Support \$100,000

DC Wheel Productions

www.danceplace.org
DC Wheel supports Dance Place, a community resource that nurtures artists, presents dance, and trains children and adults.
General Operating Support \$35,000

GALA Hispanic Theatre

www.galatheatre.org
GALA Hispanic Theatre promotes Latino performing arts and culture through the presentation of bilingual theater, poetry, music, and dance.
Program Support \$30,000
Management Assistance Program \$15,000

Grantmakers in the Arts

www.giarts.org
Grantmakers in the Arts strengthens arts grantmaking by improving communication and promoting meaningful support of arts and culture.
Nonprofit Sector Strengthening \$2,500

Hirshhorn Museum and Sculpture Garden, Smithsonian Institution

hirshhorn.si.edu
Hirshhorn Museum and Sculpture Garden enhances public understanding and appreciation of contemporary art in the Washington, DC region through local educational and community programs.
Program Support \$25,000

Historical Society of Washington, DC

www.citymuseumdc.org
Historical Society of Washington, DC preserves and presents Washington, DC history to residents and tourists through exhibitions, programs, publications, and a research library.
Salary Support \$40,000
Management Assistance Program \$25,000

Joy of Motion Dance Center

www.joyofmotion.org
Joy of Motion provides dance training and performance opportunities that reinforce the principle that dance is for everyone.
General Operating Support \$25,000

Mason/Rhynes Productions

www.mason-rhynes.org
Mason/Rhynes Productions provides performing arts workshops, residencies, and performances that are designed to challenge, enlighten, and entertain diverse audiences.
General Operating Support \$10,000

Moving Forward: Contemporary Asian American Dance Company

www.dtsbcc.com
Moving Forward: Contemporary Asian American Dance Company provides dance performances and education within the context of exploring and expressing Asian American consciousness.
Salary Support \$20,000

National Children's Museum

www.ncm.museum
Formerly the Capital Children's Museum, the planned National Children's Museum will engage, inform, and delight audiences with educational experiences that help advance youth as individuals, family and community members, and citizens of the United States and the world.
Capital Campaign \$250,000

National Museum of American History, Smithsonian Institution

americanhistory.si.edu
National Museum of American History is working to preserve and provide increased access to the photographic archives of the historic Scurlock Photographic Studio, which documented Washington, DC's African American community from 1904 to 1994.
Program Support \$25,000

National Music Center and Museum Foundation

www.nationalmusiccenter.org
National Music Center and Museum Foundation strives to showcase and celebrate America's rich musical heritage through education, enlightenment, and entertainment.
General Operating Support \$25,000

Pyramid Atlantic

www.pyramidatlanticartcenter.org
Pyramid Atlantic promotes and nurtures artistic excellence for artists, youth, and the community through programs in print-making, hand paper making, digital media, and the art of the book.
Program Support \$40,500
Management Assistance Program \$15,000

Round House Theatre

www.roundhousetheatre.org
Round House Theatre explores the human condition through an eclectic body of plays and comprehensive educational offerings.
General Operating Support \$30,000

Serenity Players

www.serenityplayers.org
Serenity Players is a community-based theater that works to bridge social gaps through self-expression, dramatic arts, and cultural heritage programs.
General Operating Support \$2,500

Signature Theatre

www.signature-theatre.org

Signature Theatre is committed to reinventing great theatrical works and developing powerful new works that serve the theater community and delight audiences.

General Operating Support \$30,000

Teatro de la Luna

www.teatrodela luna.org

Teatro de la Luna promotes Hispanic culture and fosters cross-cultural understanding between the Spanish- and English-speaking communities in Greater Washington.

General Operating Support \$20,000

Theater Alliance of Washington DC

www.theateralliance.com

Theater Alliance presents new or rarely produced plays and theatrical works that relate to the interests of diverse and underserved audiences.

General Operating Support \$25,000

Theatre Downtown

www.stageguild.org

Theatre Downtown/Washington Stage Guild performs plays that often are overlooked by other area companies.

Management Assistance Program \$25,000

Theatre Lab

www.theatre lab.org

Theatre Lab broadens participation in theater arts and provides theater education for the elderly, underserved youth and adults, people living with HIV/AIDS, and incarcerated youth.

Program Support \$10,000

Transformer

www.transformergallery.org

Transformer supports and advocates emerging expression in the DC visual arts community by connecting and promoting artists locally, nationally, and internationally.

General Operating Support \$21,500

Washington Ballet

www.washingtonballet.org

Washington Ballet presents a full season of classic and contemporary ballet and provides dance education through its school of ballet and community outreach initiatives.

General Operating Support \$35,000

Washington, DC Martin Luther King, Jr. National Memorial Project Foundation

www.buildthedream.org

Washington, DC Martin Luther King, Jr. National Memorial Project Foundation is leading a collaborative design, funding, and construction process to create a memorial to honor Dr. King's legacy.

Building and Renovation \$25,000

Washington Performing Arts Society

www.wpas.org

Washington Performing Arts Society sponsors and presents arts programs that provide opportunities for artists and the public to learn about music and dance.

Program Support \$25,000

Woolly Mammoth Theatre Company

www.woollymammoth.net

Woolly Mammoth Theatre Company develops and produces new plays and educational programs that explore the edges of theatrical style and human experience.

General Operating Support \$30,000

Management Assistance Program \$25,000

World Arts Focus

www.worldartsfocus.org

World Arts Focus brings arts education and performances to its neighborhood to support artists, build community, and stimulate revitalization.

General Operating Support \$80,000

Yale University

www.yalebooks.com

Yale University Press is developing "The Encyclopedia of Washington, DC", the first comprehensive, authoritative reference work on the history of the District of Columbia.

Program Support \$25,000



Children, Youth, & Families

Alexandria Seaport Foundation

www.alexandriaseaport.org

Alexandria Seaport Foundation uses Potomac River resources and heritage to benefit local communities.

Program Support \$30,000

Beacon House Community Ministry

www.beaconhouse dc.org

Beacon House helps at-risk youth and children achieve academic success while in public schools so they can go on to lead fruitful, fulfilling lives.

General Operating Support \$10,000

Boys and Girls Clubs of Greater Washington

www.bgcgw.org

Boys and Girls Clubs of Greater Washington helps children, particularly those considered at risk, to build confidence, develop character, and acquire the skills needed to become productive, civic-minded, and responsible adults.

Income Development \$25,000

Brainfood

www.brain-food.org

Brainfood uses food as a youth development tool to build life skills in a fun, healthy, creative environment.

General Operating Support \$30,000

Bright Beginnings

www.brightbeginningsinc.org

A child development center for infants, toddlers, and preschoolers whose parents live in District crisis shelters or transitional housing, Bright Beginnings prepares homeless children to enter kindergarten and supports parents as they stabilize their home lives.

Staff Development \$100,000

Staff Development \$25,000

Management Assistance Program \$10,000

Building Bridges Across the River

www.thearc dc.org

Through its joint-use Town Hall Education Arts and Recreation Campus (THEARC) facility, Building Bridges Across the River brings nonprofit programs of culture, health, recreation, and human development to residents residing east of the Anacostia River.

Income Development \$25,000

Capital Area

Asset Building Corporation

www.caab.org

Capital Area Asset Building Corporation helps District nonprofits run financial literacy and individual development account programs for low-income people.

General Operating Support \$30,000

City Arts

www.cityartsdc.org

City Arts works to enhance and maintain the visual quality of the urban landscape, to provide inner-city youth with creative alternatives to destructive behavior, and to advance education, awareness, and appreciation for the visual arts.

General Operating Support \$25,000

City at Peace

www.cityatpeace dc.org

City at Peace is a nonprofit youth development organization that uses the performing arts to teach and promote cross-cultural understanding and non-violent conflict resolution.

General Operating Support \$25,000

City Year Washington, DC

www.cityyear.org/dc

Part of the AmeriCorps network, City Year Washington, DC engages young adults in year-long terms of full-time, team-based community service in areas such as substance abuse and HIV/AIDS prevention, literacy, mentorship, and leadership development.

Program Support \$15,000

Columbia Heights Youth Club

www.chycdc.org

Columbia Heights Youth Club provides DC youth with education, recreation, and personal growth activities and builds their resistance to crime, substance abuse, violence, and delinquent behavior.

General Operating Support \$25,000

Community Bridges

www.communitybridges-md.org

Community Bridges helps youth gain the skills and values necessary for their well-being, academic success, and development as change agents for the community.

General Operating Support \$25,000

Community Foundation for the National Capital Region

www.cfncr.org

Community Foundation for the National Capital Region sponsors the DC Alliance for Youth Advocates, a coalition of youth-serving organizations, youth, and concerned residents formed to ensure that District youth have access to high-quality and affordable developmental opportunities.

Program Support \$15,000

Community Foundation for the National Capital Region

www.cfncr.org

Through a donor advised fund at the Community Foundation for the National Capital Region, Washington Grantmakers' Children, Youth, and Families Working Group and the District of Columbia Department of Youth Rehabilitative Services seek to increase investment in youth programs in Washington, DC.

Program Support \$30,000

Previous page

Sitar Arts Center

These pages

Bright Beginnings

Community Lodgings

www.communitylodgings.org

Community Lodgings works to improve the lives of Alexandria's low-income and homeless families through housing, counseling, training, job help, and educational support programs.

Program Support \$15,000

Community Preservation and Development Corporation

www.cpdcc.org

Community Preservation and Development Corporation works to preserve housing for Greater Washington's low- and moderate-income residents and provide services to help them improve their lives.

Program Support \$25,000

Covenant House Washington

www.covenanthousedc.org

Covenant House Washington combats youth homelessness and poverty in the District by offering free services to children and adolescents.

Management Assistance Program \$15,000

Dance Institute of Washington

www.danceinstitute.org

Dance Institute of Washington provides outreach, educational programs, performance opportunities, and affordable, high-quality studio instruction in the Washington, DC metropolitan area.

Capital Campaign \$200,000

DanceMakers

www.dancemakersusa.com

DanceMakers works to save and strengthen youth by using dance and performing arts to encourage creativity and promote mental and physical well-being.

Program Support \$25,000

DC Action for Children

www.dckids.org

DC Action for Children is dedicated to improving conditions for children, youth, and families in Washington, DC.

General Operating Support \$50,000

Management Assistance Program \$10,000

DC Creative Writing Workshop

www.dccww.org

DC Creative Writing Workshop provides in-school and after-school literary arts instruction for middle and high school students in Southeast Washington.

Management Assistance Program \$10,000

DC SCORES

www.dccscores.org

DC SCORES inspires and promotes academic achievement, community involvement, and athleticism among Washington, DC youth, strengthening urban public school communities through after school soccer and creative writing activities.

Management Assistance Program \$15,000

Discovery Creek Children's Museum of Washington

www.discoverycreek.org

Discovery Creek Children's Museum of Washington uses environmental education to help children experience, appreciate, and become stewards of the natural environment.

Program Support \$30,000

Earth Conservation Corps

www.ecc1.org

Earth Conservation Corps trains youth to restore the environment while opening doors to employment and strengthening communities.

General Operating Support \$50,000

General Operating Support \$30,000

East Capitol Center for Change

www.ecccinc.org

East Capitol Center for Change is a local, family-centered youth and adult development organization that promotes community engagement to help residents of District Wards 7 and 8 develop productive, happy, and spiritually centered lives.

Salary Support \$25,000

Eastern Choral Society

www.washingtonyouthchoir.org

Eastern Choral Society's Washington Youth Choir program engages youth in rigorous music education to reinforce academic and social skills needed for success.

Program Support \$10,000

Emmaus Services for the Aging

www.EmmausServices.org

Emmaus Services for the Aging connects isolated older people with their communities and provides broad services to foster their independence.

Program Support \$15,000

Energy Institute of the Healing Arts Foundation

www.eihaf.org

Energy Institute of the Healing Arts Foundation works to prevent, reduce, and eliminate health disparities among adults and children living in underserved communities.

General Operating Support \$10,000



Fair Chance

www.fairchancedc.org

Fair Chance helps community-based youth and family organizations build sound organizational infrastructures, increase operational capacities, and achieve long-term sustainability.

Nonprofit Sector Strengthening \$15,000

Falls Church-McLean Children's Center

www.fcmlcc.org

Falls Church-McLean Children's Center provides a comprehensive, high-quality early childhood program designed to give young children a strong foundation, regardless of their family's economic resources.

Program Support \$15,000

Girl Scout Council of the Nation's Capital

www.gscnc.org

Girl Scout Council of the Nation's Capital builds leadership and inspires girls with the highest ideals of character, conduct, patriotism, and service so they may become happy and resourceful citizens.

Program Support \$25,000

Greenbrier Learning Center

www.gbhc.org

Greenbrier Learning Center provides after school academic support for neighborhood children in south Arlington in order to develop their academic and interpersonal skills.

General Operating Support \$25,000

H Street Community Development Corporation

www.hstreetcdc.org

H Street Community Development Corporation's China Challenge youth program engages high school students from DC Wards 5, 6, and 7 in rigorous exploration of Chinese culture, language, art, history, business, and economics.

Program Support \$10,000

Imagination Stage

www.imaginationstage.org

Imagination Stage works to make theater arts vital to children by nurturing their creative spirit; producing innovative, professional theater for families; and serving as a resource for teachers.

Management Assistance Program \$12,525

Inner City-Inner Child

www.innercity-innerchild.org

Inner City-Inner Child is an early childhood education program that works with child development centers to improve their quality and provide creative literacy-based programming.

General Operating Support \$20,000

Interages

www.interagesmd.org

Interages addresses community needs through caring and supportive partnerships between older adults and youth.

General Operating Support \$20,000

Jewish Social Service Agency

www.jssa.org

Jewish Social Service Agency provides professional counseling and vocational and social services to the Greater Washington community.

Management Assistance Program \$25,000

Jewish Youth Philanthropy Institute

www.jypi.org

Jewish Youth Philanthropy Institute helps teens learn responsible, effective philanthropy and civic engagement.

Program Support \$5,000

Jubilee JumpStart

www.jubileejumpstart.org

Jubilee JumpStart supports parents residing in Jubilee Housing with quality, on-site child care.

Capital Campaign \$23,000

Latin American Youth Center

www.layc-dc.org

Latin American Youth Center supports youth and families in their determination to work, live, and study with dignity, hope, and joy.

Management Assistance Program \$15,000

Levine School of Music

www.levineschool.org

Levine School of Music provides music education to students of every age, ability, and socioeconomic background.

General Operating Support \$25,000

Management Assistance Program \$10,000

Life Pieces to Masterpieces

www.lifepieces.org

Life Pieces to Masterpieces provides opportunities for young African-American males in low-income and public housing to discover and activate their creative abilities to change challenges into possibilities.

General Operating Support \$50,000

General Operating Support \$30,000

Management Assistance Program \$10,000

Martha's Table

www.marthastable.org

Martha's Table provides low-income children and teens with nutritious meals and supervised learning and literacy activities.

Program Support \$15,000

National Coalition of Community Foundations for Youth

www.ccfy.org

Through the National Coalition of Community Foundations for Youth, the Youth Transition Funders Group connects young people to support systems and institutions that will help them succeed in adulthood.

Nonprofit Sector Strengthening \$5,000

Northeast Performing Arts Group

www.nepag.net

Northeast Performing Arts Group provides performing arts instruction, academic support, and life skills training to youth residing east of the Anacostia River in Washington, DC.

General Operating Support \$25,000

Prince George's Child Resource Center

www.childresource.org

Prince George's Child Resource Center fosters stability in childcare programs, working families, and home environments so children can thrive.

Management Assistance Program \$19,000

Reaching Inside for Self-Esteem

www.riseinc-dc.org

Reaching Inside for Self-Esteem offers programs, family-strengthening services, and HIV/AIDS outreach and education to youth and families in DC's Wards 7 and 8 whose lives are threatened by poverty, violence, criminal involvement, HIV/AIDS, and drug and substance abuse.

Program Support \$20,000

Recreation Wish List Committee of Washington, DC

www.recreationwishlist.org

Recreation Wish List Committee of Washington, DC provides quality recreational and educational enrichment services to District children and youth during out-of-school time in safe, well-maintained facilities.

General Operating Support \$20,000

Rosemount Center

www.rosemountcenter.com

Rosemount Center works to prepare children and families for their futures by providing comprehensive early childhood education and family support services in a bilingual, multicultural setting.

Building and Renovation \$75,000

Sitar Arts Center

www.sitarartscenter.org

Sitar Arts Center is a community arts center that provides arts programs and activities for at-risk children, youth, and their families.

Capital Campaign \$100,000

Staff Development \$100,000

Tides Center

www.yargdc.org

Tides Center sponsors the Youth Action Research Group, which works to build the capacity of young people to critically analyze the community and engage in community organizing, advocacy, and civic education.

General Operating Support \$15,000

Urban Alliance Foundation

www.urbanalliancefoundation.org

Urban Alliance Foundation prepares economically disadvantaged DC high school students for the work force and lives of self-sufficiency.

Program Support \$40,000

Young Playwrights' Theater

www.youngplaywrightstheater.org

Young Playwrights' Theater uses theater and writing to foster dialogue, literacy, and conflict resolution among youth.

General Operating Support \$30,000

Youth Professional Development

www.ypd-md.org

Youth Professional Development supports and advocates for teen parents as they confront challenges and gain self-sufficiency.

Program Support \$20,000



This page
Sitar Arts Center

Facing page
Reston Interfaith

Civic Engagement

Action in Montgomery

www.actioninmontgomery.org

Action in Montgomery is an interfaith, multiracial network of 31 congregations that work together to effect social and economic change in Montgomery County.

General Operating Support \$25,000

Center on Budget and Policy Priorities

www.cbpp.org

Center on Budget and Policy Priorities houses the DC Fiscal Policy Institute, which analyzes the District's fiscal issues and their implications for low- and moderate-income people.

Program Support \$30,000

DC Appleseed Center for Law and Justice

www.dcappleseed.org

DC Appleseed Center works to strengthen the financial health and management of the District of Columbia.

General Operating Support \$50,000

IMPACT Silver Spring

www.impactsilverspring.org

IMPACT Silver Spring trains and supports diverse community members, fostering skills development, awareness, and relationship building across race, class, and cultural lines.

General Operating Support \$45,000

Management Assistance Program \$20,000

Neighborhood Funders Group

www.nfg.org

Neighborhood Funders Group strengthens the capacity of organized philanthropy to understand and support community-based efforts to organize and improve the economic and social fabric of low-income urban neighborhoods and rural communities.

Nonprofit Sector Strengthening \$1,600

Tenants and Workers United

www.twsc.org

Tenants and Workers United builds the collective power of low-income residents, workers, women, and youth to achieve social and economic justice.

General Operating Support \$25,000

Management Assistance Program \$15,000

Washington Interfaith Network

windc-iaf.org

Washington Interfaith Network is a multiracial, interfaith, nonpartisan organization of Washington, DC residents working together to effect social change by training neighborhood leaders to address community issues and hold elected officials accountable.

General Operating Support \$40,000

Education

21st Century School Fund

www.21csf.org

21st Century School Fund works to support education and community revitalization by increasing public and community support for modernizing urban school facilities in Washington, DC and across the nation.

General Operating Support \$25,000

Management Assistance Program \$15,000

Capitol Hill Community Foundation

www.schoolibrariesproject.org

Capitol Hill Community Foundation's School Libraries Project is transforming eight outdated school libraries in the District with the intent of providing a replicable model for revitalizing public school libraries nationwide.

Program Support \$25,000

College Summit

www.collegesummit.org

College Summit helps low-income high school graduates attain higher education by showcasing and encouraging their talents and achievements.

General Operating Support \$25,000

Community Foundation for the National Capital Region

www.cfncr.org

Community Foundation for the National Capital Region houses the Youth Education Alliance, an organization of teenagers and young adults working to identify and solve problems in District schools.

Program Support \$15,000

DC Education Compact

www.dcec.org

DC Education Compact is a community partnership that supports system-wide improvements to enhance student learning and achievement in Washington, DC.

General Operating Support \$100,000

DC Voice

www.dcvoice.org

DC Voice seeks to strengthen the public voice in public education and works to ensure high quality teaching and learning for all children in the District.

General Operating Support \$25,000

Management Assistance Program \$20,000

Gallaudet University

www.gallaudet.edu

Gallaudet University is working to expand its Hearing Speech Language Sciences Clinic and the clinic's community outreach programs.

Capital Campaign \$25,000

Grantmakers for Education

www.edfunders.org

Grantmakers for Education works to strengthen philanthropy's capacity to improve educational outcomes for all students.

Nonprofit Sector Strengthening \$1,000

Heads Up: A University Neighborhood Initiative

www.headsup-dc.org

Heads Up: A University Neighborhood Initiative provides children and youth from low-income neighborhoods with the academic skills and learning opportunities they need to succeed.

General Operating Support \$25,000

Higher Achievement Program

www.higherachievement.org

Higher Achievement strengthens the skills of intellectually curious middle-school youth in under-resourced communities and enhances their readiness to excel in demanding high school environments.

Program Support \$25,000

Southeast Ministry

www.reformationdc.org/sem

Southeast Ministry works for social justice by helping low-income African American men and women in Southeast DC achieve self-sufficiency.

Program Support \$25,000

Teach for America DC

www.teachforamerica.org

Teach for America DC provides District public schools and public charter schools with teachers who exceed traditional expectations to ensure students' academic success.

General Operating Support \$30,000

Teaching for Change

www.teachingforchange.org

Teaching for Change helps develop equitable relationships in education among families, students, school staff, and community members.

Program Support \$20,000

Management Assistance Program \$20,000

Trinity College

www.trinitydc.edu

Trinity College offers community programs at THEARC, which serves youth and adults east of the Anacostia River.

Program Support \$5,000

Turning the Page

www.turningthepage.org

Turning the Page ensures DC students receive high quality public education by increasing both family involvement in children's education and access for families to learning resources.

Program Support \$25,000

Washington Literacy Council

www.washingtonliteracycouncil.org

Washington Literacy Council works to teach DC adults how to read and write.

Capacity Building \$10,000

Washington Metropolitan Scholars

www.wmscholars.org

Washington Metropolitan Scholars creates access to top-level colleges and universities for outstanding, low-income African American students from the Washington region and also provides financial, mentoring, and retention support.

Program Support \$20,000

Employment & Skills Training

Academy of Hope

www.aohdc.org

Academy of Hope provides quality education and job skills training to low-income adults in Washington, DC.

Management Assistance Program \$20,000

ARRIBA Center

www.arribacenter.org

ARRIBA Center provides training, advocacy, and support to residents of Greater Washington who are physically, medically, and mentally disabled, economically marginalized, or from ethnic and cultural minorities.

Program Support \$15,000

Centro Familia

www.centro-familia.org

Centro Familia offers training, technical assistance, and mentoring to Latinas who want to become licensed family childcare providers.

Program Support \$15,000

Computer Community OutReach and Education

www.computercore.org

Computer Community OutReach and Education uses comprehensive computer skills training as a vehicle for building self-confidence and increasing employability among low-income individuals.

General Operating Support \$25,000



DC Central Kitchen

www.dccentralkitchen.org

DC Central Kitchen distributes surplus food from local restaurants and hotels to area community-based organizations, trains poor and homeless men and women to work in the food service industry, and operates a bakery and catering business that employs its graduates and other homeless people.

Program Support \$20,000

Jubilee Jobs

www.jubileejobs.org

Jubilee Jobs connects capable District residents with marketplace jobs.

General Operating Support \$20,000

Life Skills Workshop

www.lifeskillsworkshop.org

Life Skills Workshop empowers women re-entering the workforce with skills, knowledge, and support needed to transform their lives.

General Operating Support \$10,000

STRIVE DC

www.strivedc.org

STRIVE DC builds job readiness skills among District men and women with limited education, sporadic work histories, and other barriers to long-term employment.

General Operating Support \$20,000

Health & Mental Health

Alexandria Neighborhood Health Services

www.anhsi.org

Alexandria Neighborhood Health Services addresses the health care needs of low-income families who are uninsured or underinsured in Alexandria and surrounding communities.

General Operating Support \$35,000

Arlington Free Clinic

www.arlingtonfreeclinic.org

Arlington Free Clinic provides health care services and medications to low-income, uninsured residents of Arlington County.

Salary Support \$20,000

Columbia Road Health Services

www.crhs.org

Columbia Road Health Services works to remove financial, cultural, and language barriers and help low-income, uninsured people access quality health care.

Program Support \$30,000

Consumer Health Foundation

www.consumerhealthfdn.org

Consumer Health Foundation works to improve the health of DC area communities and supports activities that enable people to be more actively involved in their own health.

Program Support \$30,000

District of Columbia Behavioral Health Association

www.dcbha.org

District of Columbia Behavioral Health Association works to expand and improve behavioral health services in the District of Columbia through public policy advocacy and professional education.

Program Support \$25,000

District of Columbia Primary Care Association

www.dcpca.org

District of Columbia Primary Care Association works to develop an integrated primary health care delivery system in DC that guarantees access to primary care and eliminates disparities in health outcomes.

Program Support \$250,000

Grantmakers in Health

www.gih.org

Grantmakers in Health works to foster communication and collaboration among grantmakers and others and to strengthen grantmakers' knowledge, skills, and effectiveness.

Nonprofit Sector Strengthening \$2,000

Greater Baden Medical Services

www.gbms.org

Greater Baden Medical Services is a community-based primary care health center that provides high quality health care, health education, and transportation services to families living across three Southern Maryland counties.

Program Support \$20,000

Greater Prince William Area Community Health Center

(703) 792-6320

Greater Prince William Area Community Health Center increases access to high quality, culturally sensitive, comprehensive, and preventive health care to underserved and vulnerable residents of Prince William County and the cities of Manassas and Manassas Park.

General Operating Support \$30,000

Green Door

www.greendoor.org

Green Door prepares women and men with severe and persistent mental illness to work and live independently in the community.

Salary Support \$20,000

HSC Foundation
www.hscfoundation.org

HSC Foundation facilitates access to appropriate care and services for children with special needs and their families in the DC area.

Program Support \$5,000

La Clinica del Pueblo
www.lcdp.org

La Clinica del Pueblo provides culturally appropriate health services to persons in the Latino community regardless of their ability to pay.

Program Support \$30,000

Loudoun Community Health Center
(703) 779-4092

Loudoun Community Health Center provides access to comprehensive primary and preventive health care services in a medical home setting to low-income, vulnerable, and uninsured Loudoun County residents.

General Operating Support \$30,000

Mobile Medical Care
www.mobilemedicalcare.org

Mobile Medical Care provides quality medical care to low-income, working poor, homeless, uninsured, and underserved individuals in Montgomery County.

General Operating Support \$20,000

Northern Virginia Family Service
www.nvfs.org

Northern Virginia Family Service's Loudoun Kids Health Partnership provides low-income, uninsured children in Loudoun County with access to health care services.

Program Support \$40,000

NoVA Rx Central Fill Pharmacy
www.nova-rx.org

NoVA Rx Central Fill Pharmacy provides low-income residents of Northern Virginia with increased access to high quality pharmaceutical care and supporting health services.

Program Support \$20,000

Primary Care Coalition of
Montgomery County
www.primarycarecoalition.org

Primary Care Coalition of Montgomery County works to provide the county's 100,000 low-income, uninsured children and adults with increased access to primary and specialty health care.

Program Support \$30,000

Ronald McDonald House Charities
of Greater Washington, DC
www.rmhc.greaterdc.org

Ronald McDonald House Charities awards grants to nonprofit organizations that directly impact the health and well-being of children in the Greater Washington, DC area.

Capital Campaign \$25,000

Washington Free Clinic
www.wfclinic.org

Washington Free Clinic provides a broad range of primary health care services to an increasing number of people who lack access to health care.

Emergency Funds \$25,000

William Wendt Center
for Loss and Healing
www.wendtcenter.org

William Wendt Center for Loss and Healing offers education and research, individual and group counseling and therapy for children and adults, and volunteer support for people affected by life-challenging illness, loss, grief, and bereavement.

General Operating Support \$25,000



This page

Reston Interfaith

Facing page, top

Jubilee Housing

Facing page, bottom

Reston Interfaith

Homelessness & Hunger

Calvary Women's Services
www.calvaryservices.org

Calvary Women's Services provides shelter, services, and transitional and permanent housing to homeless women in Washington, DC.

Program Support \$15,000

Carpenter's Shelter
www.carpentersshelter.org

Carpenter's Shelter is the largest homeless shelter in Northern Virginia and provides transitional support services.

Salary Support \$25,000

Community Ministry
of Montgomery County
www.communityministrymc.org

Community Ministry of Montgomery County provides shelter, housing, clothing, emergency assistance, job training, counseling, and case management to low-income people in Montgomery County.

Program Support \$15,000

Food and Friends
www.foodandfriends.org

Food and Friends provides home-delivered meals, groceries, and companionship to people living with HIV/AIDS and other life-challenging illnesses.

Program Support \$25,000

Food Research and Action Center
www.frac.org

Food Research and Action Center houses DC Hunger Solutions, which works to fight hunger and improve the nutrition, health, and well-being of children and families in DC.

Program Support \$75,000

Program Support \$20,000

Loudoun Interfaith Relief
www.interfaithrelief.org

Loudoun Interfaith Relief provides emergency food to low-income, unemployed, elderly, homeless, or sick county residents regardless of their immigration status and shares food supplies with other area organizations.

Program Support \$10,000

Montgomery County Coalition
for the Homeless
www.mcch.net

Montgomery County Coalition for the Homeless provides shelter, services, and advocacy for homeless people in Montgomery County.

Management Assistance Program \$15,000

N Street Village
www.nstreetvillage.org

N Street Village works with a community of clients, staff, and volunteers on support services and a rental housing program that help homeless women gain stability and overcome homelessness.

Program Support \$20,000

Rachael's Women's Center
www.rachaels.org

Rachael's Women's Center supports the District's homeless men and women by providing meals, services, case management, and support at its day shelter, and offering permanent supportive housing to 17 formerly homeless women.

Building and Renovation \$30,000

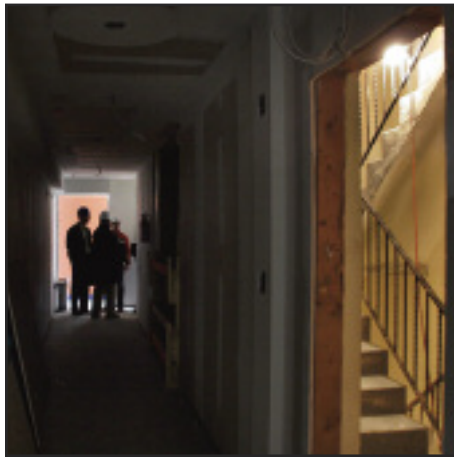
Program Support \$25,000

Samaritan Inns
www.samaritaninns.org

Samaritan Inns provides housing and services to homeless men and women to help them overcome drug and alcohol addiction and reclaim their lives.

General Operating Support \$30,000

Housing & Community Development



Coalition for Nonprofit Housing and Economic Development

www.cnhed.org

Coalition for Nonprofit Housing and Economic Development strengthens and promotes the work of the District's nonprofit housing and economic development organizations.

General Operating Support \$35,000
Management Assistance Program \$10,000

Enterprise Community Partners

www.enterprisefoundation.org

Enterprise Community Partners works with local nonprofits in the District of Columbia and nationwide to help low-income people out of poverty and into mainstream American life.

General Operating Support \$20,000

Gateway Municipalities Community Development Corporation

www.gateway-cdc.org

Gateway Municipalities Community Development Corporation was formed by the residents of Brentwood, North Brentwood, and Mt. Rainier to rejuvenate their community, primarily through the arts.

General Operating Support \$25,000

Homestretch

www.homestretch-inc.org

Homestretch provides transitional housing and services to homeless families in Fairfax County.

Building and Renovation \$10,000

Hope and a Home

www.hopeandahome.org

Hope and a Home provides affordable housing and support services to help homeless and low-income families create stable homes and make lasting changes in their lives.

General Operating Support \$20,000

Housing Unlimited

www.housingunlimited.org

Housing Unlimited provides permanent and affordable housing for low-income adults with mental illness.

Program Support \$17,500

Jubilee Housing

www.jubileehousing.org

Jubilee Housing provides affordable rental housing and services to 850 low-income adults and children in the District's Adams Morgan neighborhood.

Staff Development \$100,000
Program Support \$25,000

Local Initiatives Support Corporation

www.liscnet.org/washingtondc

Local Initiatives Support Corporation is a national community development intermediary that provides funding and technical assistance to neighborhood-based community development nonprofit organizations.

General Operating Support \$180,000

Montgomery County Coalition for the Homeless

www.mcch.net

Montgomery County Coalition for the Homeless' Partnership for Permanent Housing provides homeless men, women, and families with access to permanent affordable housing.

Program Support \$20,000

Organizing Neighborhood Equity

www.onedonline.org

Organizing Neighborhood Equity creates and preserves racial and economic equity in the District and its Shaw neighborhood.

Management Assistance Program \$25,000
General Operating Support \$20,000

Reston Interfaith

www.restoninterfaith.org

Reston Interfaith provides housing, child care, social services, and emergency assistance to low-income people in Reston and Herndon.

Staff Development \$100,000
Program Support \$10,000

University of Maryland College Park Foundation

www.foundation.umd.edu

University of Maryland College Park Foundation's Engaged University Initiative and Community Partners Program connects Prince George's County residents with university students, faculty, and staff through mutually beneficial research, learning, and social action programs.

Program Support \$25,000

Washington Regional Association of Grantmakers

www.washingtongrantmakers.org

Phase five of Washington Regional Association of Grantmakers' Community Development Support Collaborative will continue to support housing, small businesses development, and job placement programs across the Greater Washington region.

Program Support \$450,000

Immigrant Communities



Asian American LEAD

www.aalead.org

Asian American LEAD promotes the well-being of Asian American youth and families through education, leadership development, and community building.

General Operating Support \$30,000

Carlos Rosario International Career Center

www.carlosrosario.org

Carlos Rosario International Career Center provides comprehensive educational services to adult immigrants in the Washington, DC area.

General Operating Support \$30,000

CASA of Maryland

www.casademaryland.org

CASA of Maryland improves the social and economic well-being of Maryland's low-income Latino and immigrant residents.

Capital Campaign \$275,000
Program Support \$25,000

Community Foundation for the National Capital Region

www.cfncr.org

Community Foundation for the National Capital Region's Bridging Differences initiative supports diversity in the DC region and its nonprofit sector by raising awareness, developing and strengthening community partnerships, and investing in community leaders.

Program Support \$40,000

Hispanics in Philanthropy

www.hiponline.org

Hispanics in Philanthropy works to strengthen Latino communities by increasing resources for the Latino and Latin American civil sector and by increasing Latino participation and leadership throughout the field of philanthropy.

General Operating Support \$10,000

Korean Community Service Center of Greater Washington

www.kcscgw.org

Korean Community Service Center of Greater Washington provides social services, education, and advocacy to help Asian American and new immigrants adjust to life in the United States.

Program Support \$25,000

Language, Education, and Technology Center

www.languageetc.org

Language, Education, and Technology Center works with volunteer teachers and tutors to offer English and literacy training to low-income adult immigrants in the District of Columbia.

General Operating Support \$25,000

Neighbors' Consejo

www.neighborsconsejo.org

Neighbors' Consejo empowers low-income, homeless, and addicted people in crisis to move toward social and economic self-sufficiency.

Program Support \$25,000

New Neighbors Education Center of Northern Virginia

www.nneducation.org

New Neighbors Education Center of Northern Virginia provides educational programs and related services to help immigrant and refugee families become self-sufficient and well-integrated.

Program Support \$25,000

Newcomer Community Service Center

www.newcomerservice.org

Newcomer Community Service Center helps refugees and immigrants achieve self-sufficiency and fully participate in American society.

Program Support \$25,000

Law & Justice

Asian Pacific American Legal Resource Center

www.apalrc.org

Asian Pacific American Legal Resource Center addresses language and cultural barriers that prevent Asians in Greater Washington from accessing legal services and understanding the legal system.

Staff Development Support \$100,000

General Operating Support \$30,000



Asian/Pacific Islander Domestic Violence Resource Project

www.dvrp.org

Asian/Pacific Islander Domestic Violence Resource Project provides culturally and linguistically appropriate services for Asian/Pacific Islander victims of domestic violence.

General Operating Support \$50,000

Management Assistance Program \$15,000

Ayuda

www.ayudainc.org

Ayuda provides community-based legal services to immigrants in the areas of immigration, domestic violence, and domestic relations.

General Operating Support \$40,000

Management Assistance Program \$12,500

Bread for the City

www.breadforthecity.org

Bread for the City provides critically needed services to children and adults in Washington, DC who face life in poverty.

Program Support \$25,000

Campaign for Youth Justice

www.campaign4youthjustice.org

Campaign for Youth Justice works to end the practice of trying, sentencing, and incarcerating children under 18 in the adult criminal justice system.

Program Support \$25,000

Capital Area Immigrants' Rights Coalition

www.caircoalition.org

Capital Area Immigrants' Rights Coalition advances the human and civil rights of low-income immigrants and refugees.

General Operating Support \$30,000

Management Assistance Program \$22,000

Central American Resource Center

www.carecencdc.org

Central American Resource Center provides legal services to Central American refugees seeking permanent immigration status.

General Operating Support \$20,000

Children's Law Center

www.childrenslawcenter.org

Children's Law Center provides a comprehensive range of legal services to poor children in the District of Columbia to help them find safe, permanent homes and education, health, and social services.

Program Support \$25,000

Program Support \$25,000

Community Foundation for the National Capital Region

www.cfncr.org

A fund of the Community Foundation for the National Capital Region, the Washington, DC Police Fund promotes public safety throughout the District of Columbia.

Program Support \$10,000

Community Legal Services of Prince George's County

www.clspgc.org

Community Legal Services of Prince George's County educates, represents, and empowers low-income county residents confronting civil legal matters.

General Operating Support \$20,000

Council for Court Excellence

www.courtexcellence.org

Council for Court Excellence works to improve the administration of justice in local and federal courts and related agencies in Washington, DC by promoting court reforms, improving public access to justice, and increasing public support for the justice system.

Program Support \$20,000

DC Bar Pro Bono Program

www.dcbp.org

DC Bar Pro Bono Program works to mobilize DC Bar members to offer pro bono legal services to the District's low-income residents and the organizations that serve them.

Management Assistance Program \$10,000

Program Support \$1,000

DC Employment Justice Center

www.dcejc.org

DC Employment Justice Center works to secure and enforce the rights of low-income workers in Greater Washington.

General Operating Support \$25,000

DC Prisoners' Legal Services Project

www.dcpriisonerhelp.org

DC Prisoners' Legal Services Project provides civil legal services and advocates for humane treatment of all persons convicted or charged with a criminal offense under DC law who are in prisons, jails, or community correction programs.

General Operating Support \$20,000

DC Rape Crisis Center

www.dcrcc.org

DC Rape Crisis Center offers free crisis intervention services to survivors of sexual violence, as well as assault prevention education for community residents.

General Operating Support \$25,000

Hope House

www.hopehousedc.org

Hope House works to help inmates stay connected with their families.

Program Support \$15,000

Human Rights First

www.humanrightsfirst.org

Human Rights First advances justice, human dignity, and respect for the rule of law by advocating and providing direct legal services for asylum seekers and refugees.

Program Support \$25,000

Just Neighbors Ministry

www.justneighbors.org

Just Neighbors Ministry provides immigration legal services to low-income immigrants in Northern Virginia.

General Operating Support \$20,000

Legal Aid Society of the District of Columbia

www.legalaiddc.org

Legal Aid Society of the District of Columbia provides free civil legal services to low-income residents in DC.

Program Support \$25,000

Legal Services of Northern Virginia

www.lsnv.org

Legal Services of Northern Virginia serves low-income Northern Virginia residents who are unable to afford private legal counsel.

Program Support \$20,000

My Sister's Place

www.mysistersplaccdc.org

My Sister's Place provides shelter, transitional housing, education, and advocacy for battered women and their children.

General Operating Support \$25,000

Offender Aid and Restoration

www.oaronline.org

Offender Aid and Restoration helps offenders return to society and become productive citizens.

Program Support \$20,000

Our Place

www.ourplaccdc.org

Our Place provides women who are or have been incarcerated with the support and resources they need to resettle successfully in the community, reunite with their families, and find decent housing and jobs.

Program Support \$20,000

Management Assistance Program \$15,000

Tahirih Justice Center

www.tahirih.org

Tahirih Justice Center seeks justice for women fleeing international human rights abuses, particularly gender-based persecution and human trafficking.

General Operating Support \$60,000

Management Assistance Program \$15,000

Virginia Justice Center/ Legal Aid Justice Center

www.justice4all.org

Virginia Justice Center uses legal advocacy and education to help low-wage immigrant workers throughout Virginia gain fair treatment in the workplace.

Program Support \$20,000

Washington Lawyers' Committee for Civil Rights and Urban Affairs

www.washlaw.org

Washington Lawyers' Committee for Civil Rights and Urban Affairs uses pro bono law services to address poverty and discrimination.

Program Support \$20,000

Washington Legal Clinic for the Homeless

www.legalclinic.org

Washington Legal Clinic for the Homeless provides free legal services to people who are homeless or at risk of becoming homeless, and advocates on behalf of low-income people in the District.

Program Support \$20,000

This page

Asian Pacific American Legal Resource Center

Facing page

Jubilee Housing

Nonprofit Sector & Regional Issues

American Red Cross of the National Capital Area

www.redcrossnca.org

American Red Cross of the National Capital Area helps Greater Washington residents prevent, prepare for, and respond to natural and man-made disasters and emergencies.

Program Support \$25,000

Asian Americans/Pacific Islanders in Philanthropy

www.aapip.org

Asian Americans/Pacific Islanders in Philanthropy works to help transform philanthropy by engaging more members of the Asian American/Pacific Islander community in the philanthropic process.

Nonprofit Sector Strengthening \$2,500

Association of Small Foundations

www.smallfoundations.org

Association of Small Foundations is a membership organization that offers peer learning opportunities, targeted resources, and a collective voice in and beyond the philanthropic community.

Nonprofit Sector Strengthening \$1,000

Brookings Institution

www.brookings.edu

Brookings Greater Washington Research Program provides information and analysis on regional problems and fosters solution-driven discussions.

Program Support \$35,000

Catalogue for Philanthropy Greater Washington

www.catalogueforphilanthropy.org

Catalogue for Philanthropy Greater Washington seeks to educate and excite donors about philanthropy, provide an annual showcase of some of the best examples of philanthropy in action, and improve charitable giving.

Program Support \$25,000

Center for Nonprofit Advancement

www.nonprofitadvancement.org

Center for Nonprofit Advancement strengthens, promotes, and represents nonprofit organizations based in Greater Washington.

Nonprofit Sector Strengthening \$65,000

Nonprofit Sector Strengthening \$25,000

Communications Network

www.comnetwork.org

Communications Network provides leadership, guidance, and resources to the philanthropic community to promote its strategic use of communications as an integral part of effective philanthropy.

General Operating Support \$5,000

Community Foundation for the National Capital Region

www.cfncr.org

Community Foundation for the National Capital Region's Civic Spirit Award honors community leaders for their outstanding contributions to the Greater Washington region.

Program Support \$5,000

Community Foundation for the National Capital Region

www.cfncr.org

Community Foundation for the National Capital Region is working to increase awareness about Prince George's County and support for its nonprofit sector.

Program Support \$2,500

Community Foundation for the National Capital Region

www.cfncr.org

Alexandria Community Trust, a regional affiliate of the Community Foundation for the National Capital Region, seeks to increase philanthropic investment and engagement in Alexandria in order to improve the lives of low-income residents.

Nonprofit Sector Strengthening \$15,000

CompassPoint Nonprofit Services

www.compasspoint.org

CompassPoint Nonprofit Services provides management support for nonprofits through consulting, research, and training programs that deliver management tools, strategies, and resources.

Nonprofit Sector Strengthening \$15,000

Council on Foundations

www.cof.org

Council on Foundations promotes responsible and effective grantmaking, enhances the understanding of organized philanthropy, and secures and maintains public policy supportive of philanthropy.

Nonprofit Sector Strengthening \$20,530



Foundation Center

www.foundationcenter.org

Foundation Center maintains a database on foundations and corporate giving, provides educational programs, maintains a content-rich Website, and tracks trends in foundation growth and giving.

Program Support \$50,000

Nonprofit Sector Strengthening \$20,000

Grantmakers for Effective Organizations

www.geofunders.org

Grantmakers for Effective Organizations is dedicated to promoting learning and encouraging dialogue among funders committed to the field of organizational effectiveness.

Nonprofit Sector Strengthening \$17,500

Nonprofit Sector Strengthening \$2,500

Grants Managers Network

www.gmnetwork.org

Grants Managers Network provides information and resources to help foster efficient and effective grantmaking and improve the field of philanthropy.

General Operating Support \$1,000

Greater DC Cares

www.dc-cares.org

Greater DC Cares trains and places volunteers with local nonprofit organizations.

Nonprofit Sector Strengthening \$10,000

Independent Sector

www.independentsector.org

Independent Sector creates a national forum capable of encouraging giving, volunteering, and nonprofit initiatives that serve people, communities, and causes.

Nonprofit Sector Strengthening \$6,694

Institute for Policy Studies

www.hotsalsa.org

Institute for Policy Studies sponsors the Social Action and Leadership School for Activists, which offers networking opportunities and education in organizing, fundraising, nonprofit management, political and policy issues, and advocacy strategies.

Nonprofit Sector Strengthening \$15,000

Leadership Washington

www.leadershipwashington.org

Leadership Washington seeks to connect and challenge diverse regional leaders for the purpose of improving the quality of life in the region.

Program Support \$10,000

National Capital Area Foundation

www.bot.org

National Capital Area Foundation is the nonprofit arm of the Greater Washington Board of Trade, the regional chamber of commerce for DC, suburban Maryland, and Northern Virginia.

Program Support \$10,000

Nonprofit Finance Fund

www.nonprofitfinancefund.org

Nonprofit Finance Fund serves as a development finance institution for nonprofit organizations, working to fill their overall need for capital through financing and advisory services.

Nonprofit Sector Strengthening \$5,000

Nonprofit Roundtable of Greater Washington

www.nonprofitroundtable.org

Nonprofit Roundtable of Greater Washington works to build the strength, influence, and visibility of the nonprofit sector in Greater Washington.

Nonprofit Sector Strengthening \$50,000

Nonprofit Roundtable of Greater Washington

www.nonprofitroundtable.org

Nonprofit Roundtable of Greater Washington's disaster preparedness initiative ensures Greater Washington's nonprofit sector is fully prepared and integrated into local and regional disaster preparedness, response, and recovery plans.

Program Support \$25,000

Nonprofit Roundtable of Greater Washington

www.nonprofitroundtable.org

Nonprofit Roundtable of Greater Washington is working in partnership with Montgomery County, IMPACT Silver Spring, and the Montgomery County Community Foundation to support the county's nonprofit sector through the Montgomery County Nonprofit Sector Support Initiative.

Nonprofit Sector Strengthening \$20,000

NPower Greater DC Region

www.npowergdc.org

NPower Greater DC Region helps community-based nonprofit organizations better fulfill their missions through the use of technology.

Nonprofit Sector Strengthening \$40,000

WAMU-FM, American University

www.wamu.org

A nonprofit, non-commercial public radio station licensed to American University, WAMU-FM broadcasts public affairs programs, local news, traditional American music, and National Public Radio programming.

Program Support \$50,000

Washington Area Women's Foundation

www.thewomensfoundation.org

Washington Area Women's Foundation fosters philanthropy that invests in the economic security and potential of all women and girls in the Washington metropolitan area.

Nonprofit Sector Strengthening \$25,000

Washington Regional Association of Grantmakers

www.washingtongrantmakers.org

Washington Regional Association of Grantmakers promotes and supports effective and responsible philanthropy by serving the needs of grantmakers in Greater Washington.

Nonprofit Sector Strengthening \$10,650